

NEXGO UN20

Version 6.2 September 2024

[NEXGOGLOBAL.COM](https://nexgoglobal.com)

© 2024 NEXGO | The information contained in this document is subject to change without notice. All pictures shown are for illustration purpose only, actual product and software may vary. NEXGO and the NEXGO logo are either trademarks or registered trademarks of NEXGO in the China and/or other countries. All other trademarks or brand names are the properties of their respective holders.



UN20

Designed for Unattended Payment



UN20 is an innovative unattended payment terminal that can assist you in providing a great self-service experience. It's simple to integrate it into other vending machines and external devices. UN20's excellent performance, dependability, multiple configurations, and interfaces open up endless possibilities.

Excellent Performance

Quad-Core Cortex A53

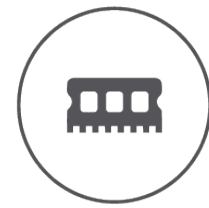
Multiple Configurations

For Multi-Scenarios

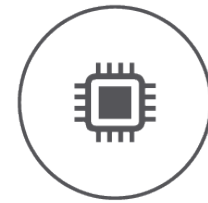
Unattended Payment

Premium Customer Experience

Excellent Performance



2.0 GHz Quad-Core
Cortex A53



2GB DDR+8GB Flash



Android 11



-20° C to 70° C



Interfaces and Configurations

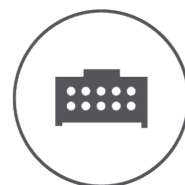
UN20 is equipped with multiple superior interfaces and configurations that allow for endless possibilities.



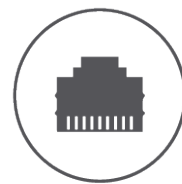
Sensors



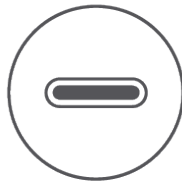
LAN



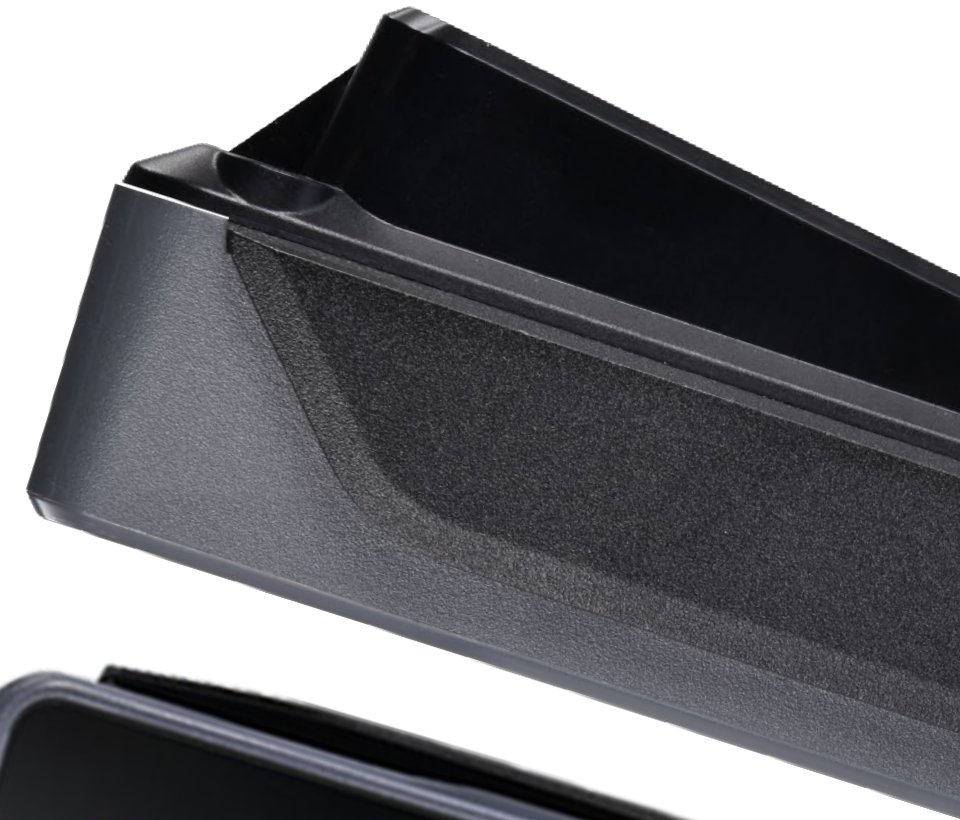
MDB



RS232



USB Type-C



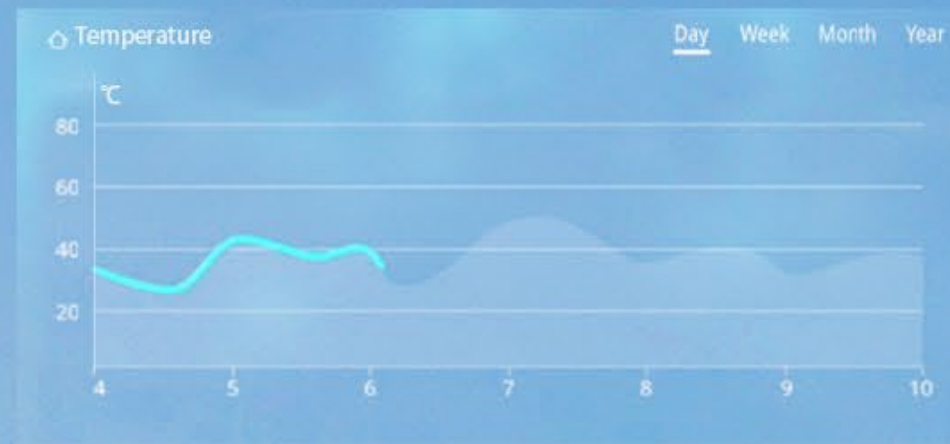


Operate with Gloves

High-sensitivity touch panel ensures the users can operate with gloves even at low temperature.

Weather-Resistant Material

UN20 uses a weather-resistant material that prevents the surface from fading even after 5 years of exposure to sunlight.



1500
hour

Adaptive Brightness

The proximity sensor and light sensor of UN20 wake the terminal while detecting the change of ambient light and the presence of nearby users without any physical contact. It will optimize the power consumption to save energy and protect the environment.



Payment Methods

The clear indicator lights will guide users to settle the payment even in the dark. The camera on the bottom of UN20 conforms user habit when scanning the QR code.

-  Bluetooth
-  Wi-Fi
-  4G



Excellent Reliability

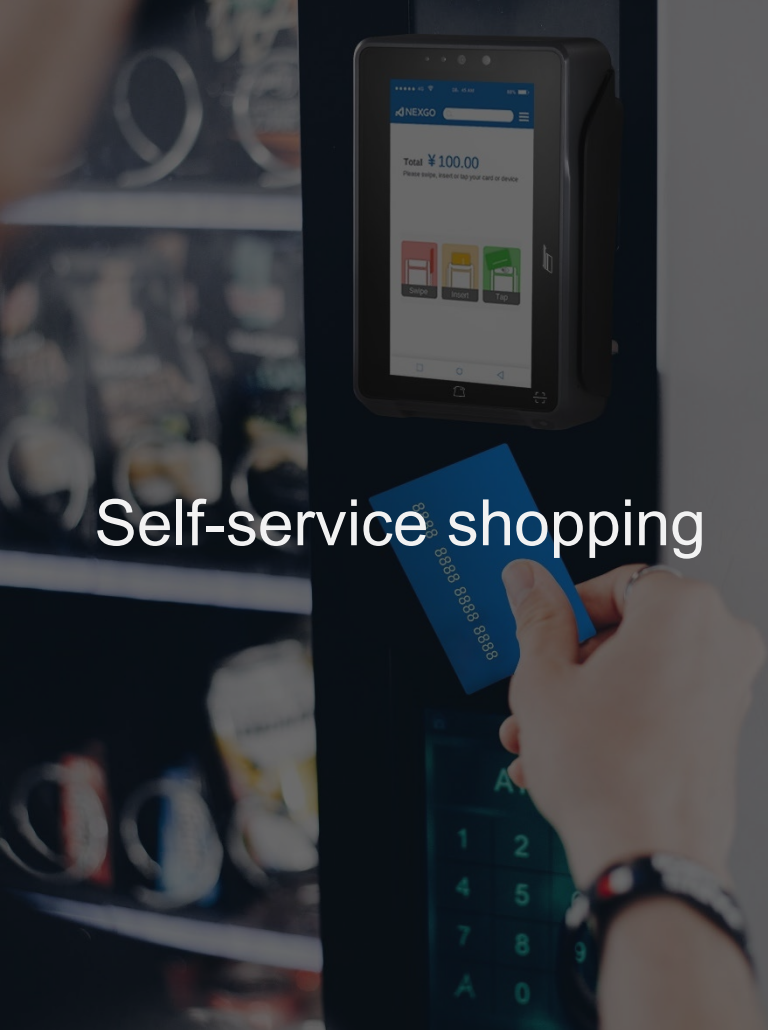
IP65

IK09

-20°C
to 70 °C

ATEX





Self-service shopping



Laundromat



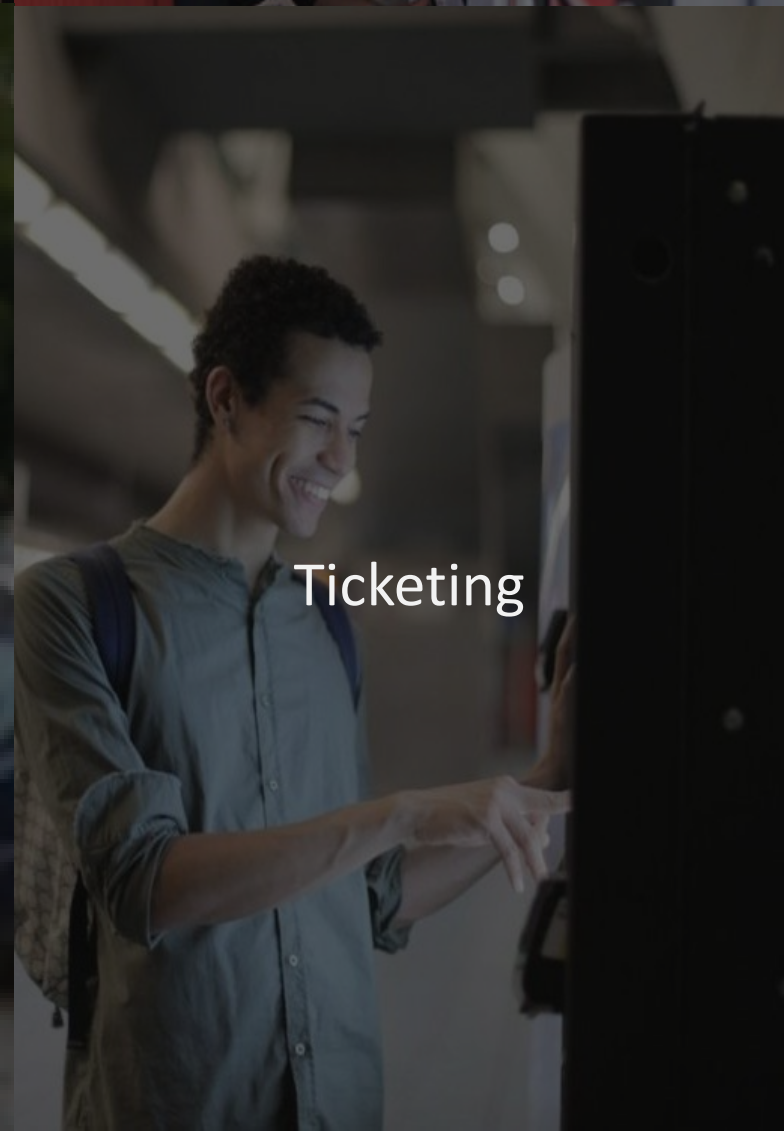
Vending Machines



Gas Station



Parking



Ticketing

Scenarios

The security, stability, and premium that the UN20 provides are applicable in a variety of scenarios, including self-service shopping, laundry, vending machines, gas stations, parking lots, ticketing, and so on.

UN20

OS Android 11	Waterproof and Dustproof Match IP65 standard	Audio 1 x Speaker	Power DC:12~48V(Digital I/O, MDB Slave, Master & Executive), RS232 AC:19~30V(MDB Master & Executive)
Processor Quad-core Cortex-A53, 2.0GHz	Card Readers Magnetic stripe cards Chip Cards Contactless Cards	Physical 146*101*57mm Cutout size: 108.7mm*86.4mm Device: 620 g Packaging: 1066 g (Including antenna 293 g)	Keys 1 Reset Key, 2 Volume Keys
Memory 2GB RAM + 8GB ROM (Micro SD Card Supported, up to 128GB)	Communication 4G/3G/2G Wi-Fi, 802.11a/b/g/n/ac, 2.4GHz&5GHz BT5.x	Positioning GPS, GLONASS or BeiDou	Environmental Operating Temperature : -20°C to 70°C Storage Temperature : -30°C to 80°C Relative Humidity : 10% to 95%(Non-Condensing)
Display 5" HD (1280 x 720) Color Screen, Capacitive Touchscreen, Multi-Touch	Card Slots 2 x SIM 1 x SD 4 x SAM	Ports 1 x USB Type-A, 1 x USB Type-C 1 x LAN, 2 x RS232 1 x MDB Master & Executive, 1 x MDB Slave 1 x Digital I/O, 1 x SMA 1 x HDMI	Certifications PCI 6.x, EMV L1&L2, EMV CL1, QPBOC L1, Quickpass, Paypass, Paywave, TQM, JCB, Discover, Amex. IP65, IK09, ATEX, CE, RoHS, PTCRB
Cameras Front: 2 MP, FF Bottom: 2MP, FF with Flashlight	PIN Pad Software PIN Pad Fixed PIN Supported	Accessories MDB Cable	

THANK YOU!

[NEXGOGLOBAL.COM](https://nexusglobal.com)

© 2024 NEXGO

