

# NEXGO

PRODUCTS, SERVICES,  
SOLUTIONS



[WWW.NEXGOGLOBAL.COM](http://WWW.NEXGOGLOBAL.COM)  
[sales@xgd.com](mailto:sales@xgd.com)



# Contents

## New Products

### Solutions

- NEXGO CLOUD
- Applications
- Technologies
- Industries

### Products

- Unattended
- Smart POS
- Portable
- Desktop, PIN Pad
- MiniPOS, mPOS
- Kiosk
- QR Terminals

## Contact Us

© NEXGO | The information contained in this document is subject to change without notice. All pictures shown are for illustration purpose only, actual product and software may vary. NEXGO and the NEXGO logo are either trademarks or registered trademarks of NEXGO in the China and/or other countries. All other trademarks or brand names are the properties of their respective holders.

# Introduction

We believe that through our innovations, as well as the focus and professionalism on safe payment, NEXGO can create better lives with our partners, clients and product users.

After 20 years of development, NEXGO now is a worldwide influential technology company providing payment terminals and comprehensive associated technical services for electronic payment (stock code: 300130). For now, NEXGO has sold more than 68,000,000 POS terminals around the world, covering over 100 countries and regions.

“Sustainable and Eternal NEXGO” is our ambitious and far-sighted vision, it drives us forward to embrace change, keep innovating, keep providing consumers with intuitive, secure, convenient and fast payment technologies.



**2001**  
Founded



**300130**  
Listed in 2010



**NO.4**  
POS Global Shipment



**68M+**  
Terminals Deployed



**100+**  
Countries and Regions

# Milestones



# Products



### Unattended   Smart POS   Portable



### Desktop, PIN Pad   MiniPOS, mPOS   Kiosk



### QR Terminals



# Certifications



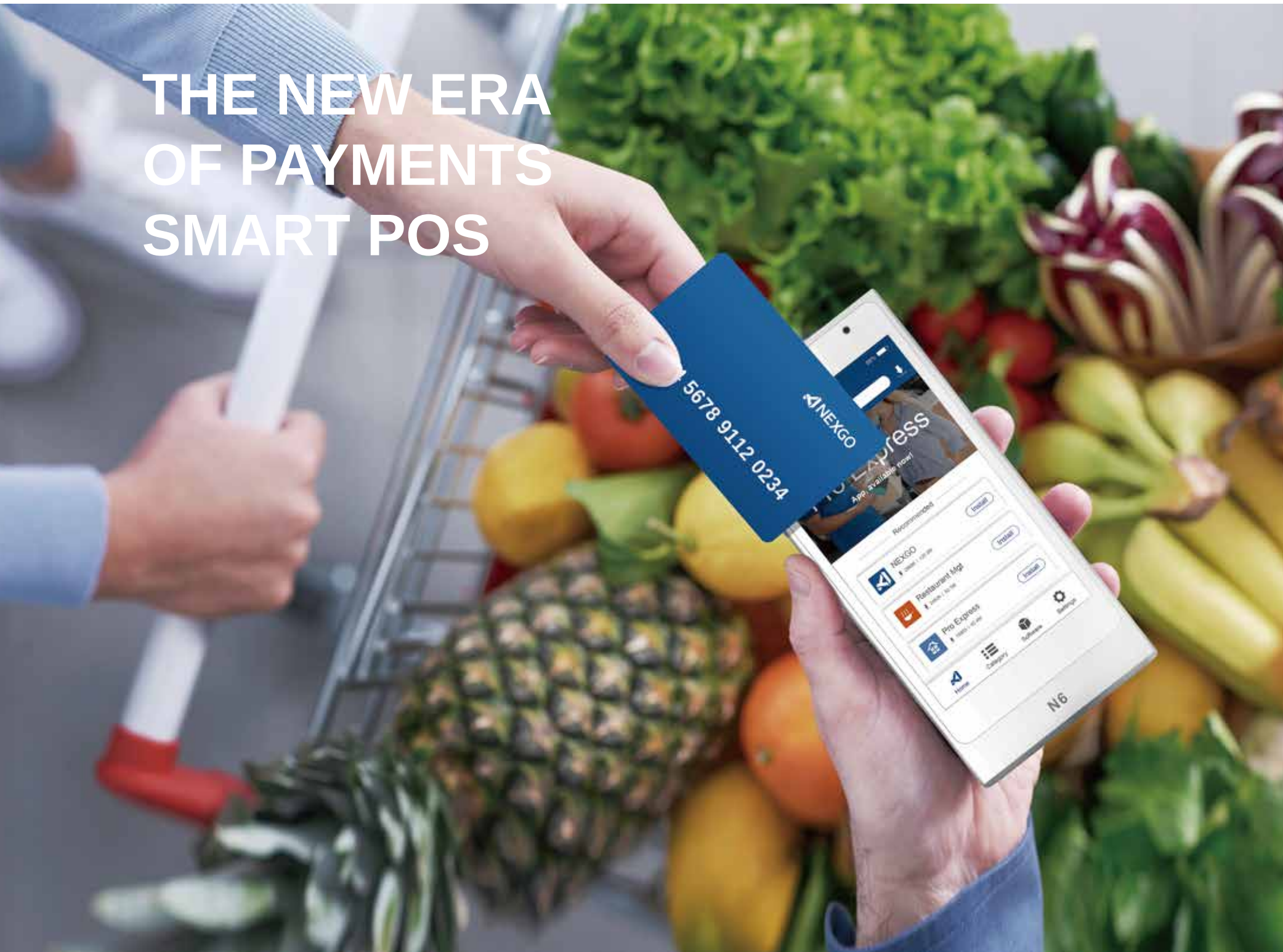
## New Products

NEXGO introduces cutting-edge payment solutions, enhancing efficiency and security for businesses globally with innovative, reliable, and user-friendly products.

Android 10  
Quad-Core Processor + Security Chip  
HD, Touchscreen  
4G/3G/2G, Wi-Fi, BT



# THE NEW ERA OF PAYMENTS SMART POS



## Android System

Android system makes everything easy, intuitive and securer. You can use smart POS terminals in more scenarios, achieve more functions and receive a stronger protection because of its compatible ability in software and hardware, more than just getting payments.

Find more apps:



Coupons



VIP



Reports



Invoicing



Top Up



Finance

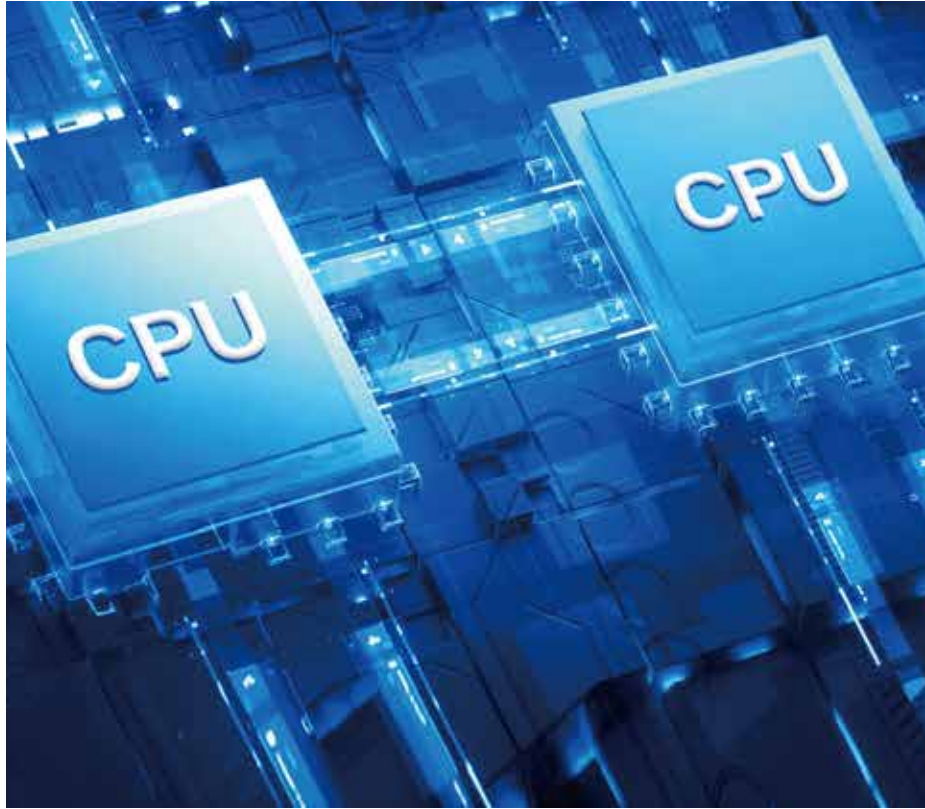


Store



Order

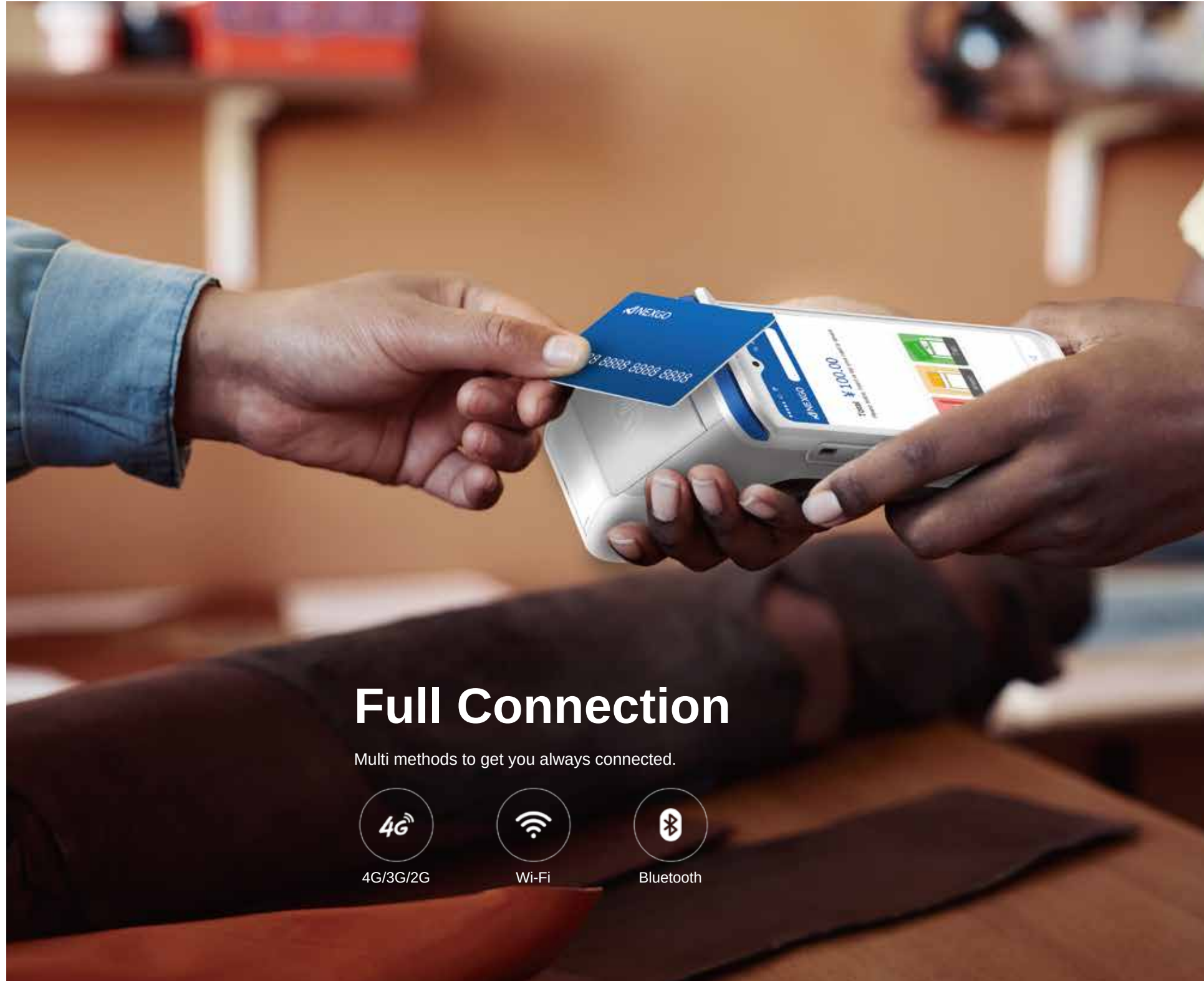




## Powerful Chips

Each NEXGO smart POS terminal is equipped with a quad-core processor with four independent units and a security chip, quad-core processor brings better performance as more tasks will be accomplished simultaneously by it, at the same time, security chip improves the security level of these POS terminals.

8GB Flash + 1GB RAM



## Full Connection

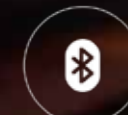
Multi methods to get you always connected.



4G/3G/2G



Wi-Fi



Bluetooth



# N62

## Flexible

Integrate with Other Products

## Screen Rotation

Built in G-Sensor

## Long Standby

550+ Transactions

## N62 Smart Mini Terminal

### OS

Android 10

### Memory

1GB RAM + 8GB ROM

### Cameras

Front: 2 MP, FF

### Communication

4G/3G/2G

Wi-Fi, 802.11a/b/g/n, 2.4GHz&5GHz

BT4.x

### Card Slots

2 x SIM

### Keys

1 Power Key

### Ports

1 x Type C USB OTG

### Adaptor

DC 5.0V/1.0A

### Environmental

Operating Temperature :

0°C to 50°C

Storage Temperature :

-20°C to 70°C

Relative Humidity :

5% to 95%(Non-Condensing)

### Processor

Quad-core

Cortex-A53, 1.5GHz

### Display

4" (480 x 480) Color Screen,

Capacitive Touchscreen, Multi-Touch

### Card Readers

Chip Cards

Contactless Cards

### Battery

3.8V/2000mAh

Rechargeable Li-ion Battery

### Audio

1 x Speaker

### Positioning

GPS, GLONASS or BeiDou

### PIN Pad

Software PIN Pad

Fixed PIN Supported

### Physical

92.4 x 89.7 x 17.7 mm

176 g

### Accessories

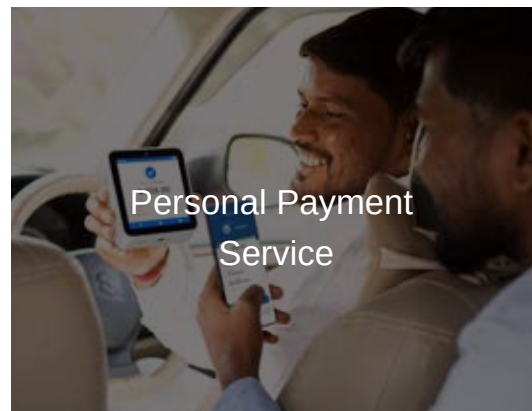
Integrated Payment Module Base

Charging Base

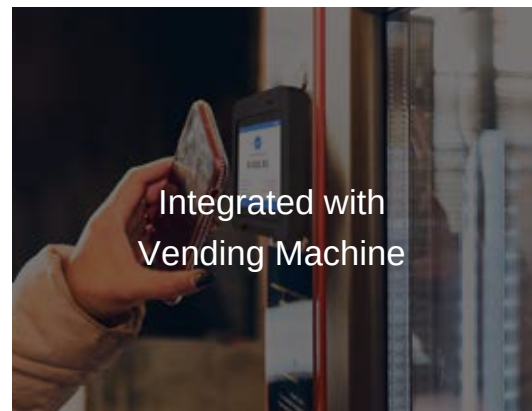
### Certifications

PCI 6.x, CE, FCC, EMV LI/L2, EMV CLI,

Paypass, Paywave etc.



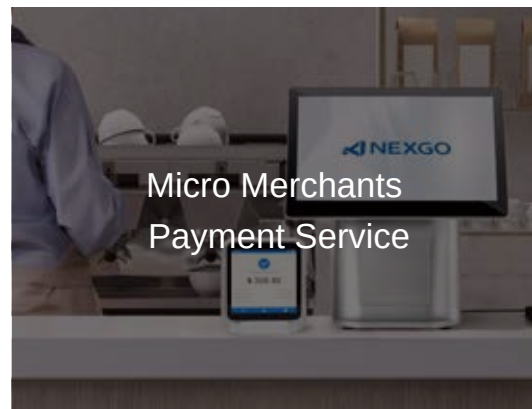
Personal Payment Service



Integrated with Vending Machine



Integrated with Smart mini-ECR



Micro Merchants Payment Service



# EF60

## Performance

Android 11.0 Quad- Core Processor

## Flexible and Versatile

Designed for Seamless Interactions

## Elegant

Modern Stylish and Simple



## EF60 Smart mini ECR

### OS

Android 11

### Memory

4GB RAM + 64GB ROM  
(Micro SD Card Supported, up to 128GB)

### Display

Main: 10.1" (1280 × 800) Color Screen,  
Capacitive Touchscreen  
Customer Facing Display: 4.0" (480\*480)  
Color Screen Capacitive Touchscreen

### Card Readers

Chip Cards  
Contactless Cards

### Audio

1 x Speaker  
1 x Microphone

### Keys

1 Power Key

### Physical

277mm (L) x 252mm(W) x 86mm(H)

### Certifications

CE, FCC  
EMV3.0, L1&L2, Quickpass, Paypass,  
PayWave, JCB, AMEX, Discover, TQM;  
PCI6.X

### Accessories

Scanning Module(Built-in)  
NFC Reader  
Dallas Key  
Custom-made Fiscal Unit Extension

### Processor

Quad-core  
A55, 2.0GHz

### Camera

Front Camera: 2 MP

### Printer

High Speed Thermal Printer,  
Paper Roll Width : 80/58mm,  
Diameter: 50mm  
Support Automatic Cutter

### Communication

4G/3G/2G  
Wi-Fi, 802.11a/b/g/n/ac, 2.4GHz&5GHz  
BT 4.X

### Card Slots

2 x SIM  
1 x TF card

### Adaptor

DC 12V/7A

### PIN Pad

Software PIN Pad  
Blind PIN Supported

### Environmental

Operating Temperature : 0°C to 50°C  
Storage Temperature : -20°C to 70°C

### Ports

4 x Type-A USB  
1 x Type-C USB OTG  
1 x RJ45, LAN  
1 x RJ12, Cash Drawer  
1 x DC, 1 x Audio Jack 3.5mm  
2 x RS232



# N96

## Performant

Android 11.0 & Quad-Core Processor

## Elegant

Modern, Stylish and Simple

## Power-Efficient

Polymer Battery



## N96 Smart POS Terminal

### OS

Android 11

### Processor

Quad-core  
Cortex-A53, 2.0GHz

### Cameras

Front: 2 MP, FF  
Rear : 5 MP, AF with Flashlight

### Card Readers

Magnetic stripe cards  
Chip Cards  
Contactless Cards

### Battery

7.6V/3050mAh  
800 cycles life  
Rechargeable polymer lithium battery

### Audio

1 x Speaker  
1 x Microphone (Optional)

### Positioning

GPS, GLONASS, BeiDou

### Ports

1 x Type C USB OTG  
POGO PIN

### Adaptor

DC 5.0V/2.0A

### Environmental

Operating Temperature : 0°C to 50°C  
Storage Temperature : -20° C to 60° C

### Certifications

CE,FCC,UL, ATEX, IP54;ROHS/WEEE;  
PTCRB;EMV3.0, L1&L2, Quickpass, Paypass,  
PayWave, JCB, AMEX, Discover, TQM;  
PCI6.X

### Memory

2GB RAM + 16GB ROM  
(Micro SD Card Supported, up to 128GB)

### Display

6.5" HD (1600 x 720) Color Screen,  
Capacitive Touchscreen, Multi-Touch

### Printer

High Speed Thermal Printer,  
Paper Roll Width : 58mm,  
Diameter: 40mm

### Communication

4G/3G/2G  
Wi-Fi, 802.11a/b/g/n/ac, 2.4GHz&5GHz  
BT5.X

### Card Slots

1 x SIM + 2 x SAM  
Optional: 2 x SIM+1 x SAM  
Optional: eSIM  
1 x SD

### Keys

1 Power Key, 2 Volume Keys

### PIN Pad

Software PIN Pad  
Blind PIN Supported

### Physical

212mm (L) x 79.6mm(W) x 64.5mm(H)  
485g (Including Battery)

### Accessories

Charging Base (Under planning)  
Multifunctional Base(Under planning)  
Scanning Module(Built-in)



# CT20

## Performant

Arm Cortex-A53 2.0GHz

## Multiple Interfaces

Fit in various scenarios

## Desktop

User-friendly



# CT20P

## Performant

Arm Cortex-A53 2.0GHz

## Compact

Fit in retail check out experience

## Desktop

User-friendly

## CT20 Smart Countertop POS Terminal

### OS

Based on Android 11

### Display

4.0", 480 \* 800 IPS LCD  
Capacitive Touchscreen

### Camera

Front: 2MP

### Printer

High Speed Thermal Printer,  
Paper Roll Width : 58mm,  
Diameter: 40mm

### Physical

186 x 82 x 72 mm

### Audio

1 x Speaker  
1 x Audio jack

### Adaptor

DC: 9V-2A

### Processor

Quad-Core Processor  
Cortex A53, 2.0GHz

### Card Readers

Magnetic stripe cards  
Chip Cards  
Contactless Cards

### Keypad

15 physical keys(Numeric/ Function)  
Removable privacy shield(Optional)

### Ports

1 x USB Type-A,  
1 x USB Type-C  
1 x LAN,  
2 x RS232

### Certifications

PCI 6.x, EMV L1, EMV CL1, Quickpass,  
Paypass, Paywave, TQM, JCB, Discover,  
Amex, FCC, CE, RoHS

### Memory

2GB RAM + 8GB ROM

### Communication

LAN  
Wi-Fi, 802.11a/b/g/n/ac, 2.4GHz&5GHz  
BT5.X  
4G/3G/2G (Optional)

### Card Slots

1 x SD  
2 x SAM  
1 x SIM (optional)

### Environmental

Operating Temperature : -10°C to 45°C  
Storage Temperature : -20°C to 70°C  
Relative Humidity : 10% to 95%  
(Non-Condensing)

## CT20P Smart PIN Pad

### OS

Based on Android11

### Display

4.0", 480 \* 800 IPS LCD  
Capacitive Touchscreen

### Camera

Front: 2MP

### Physical

166 x 82 x 30 mm

### Audio

1 x Speaker  
1 x Audio jack

### Adaptor

DC: 5V-2A  
POE (Optional)

### Processor

Quad-Core Processor  
Cortex A53, 2.0GHz

### Card Readers

Magnetic stripe cards  
Chip Cards  
Contactless Cards

### Keypad

15 physical keys(Numeric/ Function)  
Removable privacy shield

### Ports

Multifunction cable (integrated USB,  
LAN, and RS232)  
Kensington lock

### Certifications

PCI 6.x, EMV L1, EMV CL1, Quickpass,  
Paypass, Paywave, TQM, JCB, Discover,  
Amex, FCC, CE, RoHS

### Memory

2GB RAM + 8GB ROM

### Communication

LAN  
Wi-Fi, 802.11a/b/g/n/ac, 2.4GHz&5GHz  
BT5.X

### Card Slots

1 x SD  
2 x SAM

### Environmental

Operating Temperature : -10°C to 45°C  
Storage Temperature : -20°C to 70°C  
Relative Humidity : 10% to 95%  
(Non-Condensing)



# N80

## Ultra-large Battery

10,000mAh

## Dual Operation

Keypad + Touch Screen

## High-reliability

Built Tough And Drop-resistant



## N80 Smart POS Terminal

### OS

Android 13

### Processor

Quad-Core, Cortex A53, 2.0GHz

### Communications

4G/3G/2G

Wi-Fi, 802.11a/b/g/n/ac, 2.4GHz&5GHz  
BT5.X

### Cameras

Front: 0.3 MP, FF(Optional)

2 MP, FF(Optional)

Rear: 0.3 MP, FF

2 MP, FF(Optional)

5 MP, AF with Flash(Optional)

### Printer

High Speed Thermal Printer

Paper Roll Width : 58mm,

Diameter: 40mm

Speed : 80mm/s Max

### Keys

1 Power Key

15 Keys (10 numeric keys+5 function keys)

With Backlight

### Card Slots

2 x SIM + 1 x SAM

Optional: 1 x SIM+2 x SAM

Optional: 1 x SIM+4 x SAM

Optional: eSIM, 1 x SD

### Environmental

Operating Temperature : 0 ° C to 50° C

Storage Temperature : -20 ° C to 60° C

### Physical

176.4mm (L) x 77.5mm(W) x 69mm(H)

425g (Including Battery)

### Memory

1GB RAM + 8GB ROM;

2GB RAM + 32GB ROM (Optional);

(Micro SD Card Supported, up to 128GB)

### Display

4" WVGA (800 x 480) Color Screen,

Capacitive Touchscreen

### Positioning

GPS,GALILEO,GLONASS,BEIDOU

### Battery

7.4V/2500mAh

7.4V/5000mAh(Optional)

Rechargeable Lithium Polymer Battery

### Card Readers

Magnetic stripe cards

Chip Cards

Contactless Cards

### Audio

1 x Speaker

1 x Microphone(Optional)

### Ports

1 x Type C USB OTG

1 x DC Port

1 x Audio Jack(Optional)

POGO PIN

### Accessories

Charging Base

### Certifications

PCI6.X,CE,FCC,RoHS ;

EMV3.0, L1&L2, Quickpass, Paypass,

Paywave, JCB, AMEX, Discover, TQM

# EF910

## Performance

Quad-Core ARM

## Elegant Design

Slender and stramlined

## Rich Interfaces

Available for external devices



## EF910 Smart ECR

### OS

Android 11

### Processor

Cortex Quad-core  
A55, 2.0GHz

### Cameras

Built-in camera 2 MP(Optional)  
Binocular camera 2 MP(Optional)

### Audio

Built-in Speaker

### Keys

1 Power Key

### Adaptor

AC:100-240V  
DC:12V-5A

### Memory

2GB RAM + 16GB ROM  
4GB RAM + 64GB ROM(Optional)  
(Micro SD Card Supported up to 128GB)

### Display

15.6" Touch + 15.6" Display  
15.6" Touch + 11.6" Display(Optional)  
15.6" Touch + 8-digit LED(Optional)

### Ports

2 x USB 2.0, 1 x USB 3.0,  
1 x USB OTG  
1 x RS232, 1 x RJ11  
1 x RJ45  
1 x SIM Card, 1 x SD Card  
1 x DC

### Accessories (Optional)

Scanning Module

### Certification

3C, CE, RoHS

### Communication

Wi-Fi, 802.11a/b/g/n/ac, 2.4GHz&5GHz  
BT 4.0  
LAN 1000M

### Printer

High Speed Thermal Printer, Paper  
Roll Width : 80mm, Diameter: 58mm  
Support Automatic Cutter

### Environmental

Operating Temperature:  
-10°C to 50°C  
Storage Temperature:  
-20°C to 60°C  
Relative Humidity :  
5% to 95%(Non-Condensing)

### Physical

430mm (L) x 290mm(W) x 490mm(H)

## Solutions

With tens of millions of NEXGO terminals are sold worldwide, NEXGO service system is kept improving and upgrading to satisfy the dynamically changing demands of our valued customers around the world.

### NEXGO CLOUD

Terminal Management | NEXGO Store | NEXGO Dev  
| NEXGO RKI | Remote Assist | SoftPoS | eSIM

### Applications

Aftersales



# NEXGO CLOUD

Introducing a brand new cloud system which incredibly brings the cutting-edge technology and tools to grow your business and inspire the whole payment ecosystem.



## GROWING YOUR BUSINESS BEYOND PAYMENT

### What's NEW

NEXGO CLOUD is a new concept and one of the major breakthroughs in the payment industry. Besides the upgraded terminal management and intuitive UI system, it also offers rich tools and functional modules to build an accessible and customizable cloud tool suite for your business.



## CLOUD for All Players

### Market Owners

In your market, there're hundreds and thousands of terminals, leveraging the power of NEXGO CLOUD, you can protect the merchants from the loss of frauds and wrong operations, support the merchants, deliver needed apps, and advertise your products or services.

### Support Team

NEXGO CLOUD offers the best and most comprehensive terminal support function than ever. It helps the support team locate and troubleshoot the problems remotely, helps merchants solve the problem faster and smarter.

### Merchants

Through NEXGO CLOUD, merchants get convenience from remote terminal protection and support, terminal management, software management, etc. And find the opportunity from leading industrial apps.

### App Developers

The NEXGO Store at every NEXGO smart POS terminal will be the industry leading app market in the payment industry. App developers can upload apps by NEXGO CLOUD, sharing the apps to the world's tier one market for merchants.

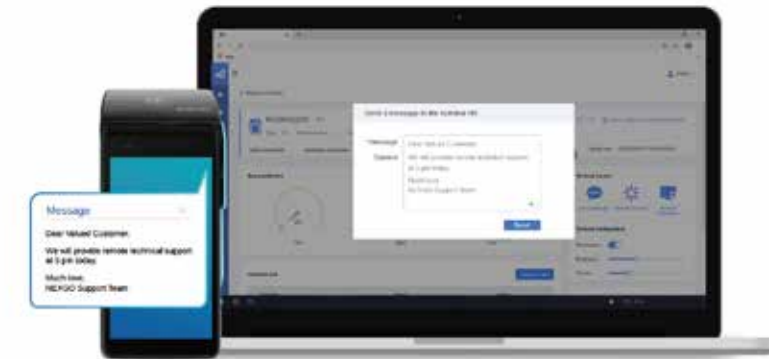
# NEXGO CLOUD







NEXGO CLOUD is a comprehensive and cloud-based service platform helps your business.

## Intuitive and Upgraded UI System

We're improving the UI system of NEXGO CLOUD in two ways, making it more intuitive, and designing it to be more comfortable for hours of reading and operation.




 <p><b>Terminal Monitoring</b></p> <ul style="list-style-type: none"> <li>Obtaining Terminal Details</li> <li>Locations &amp; Terminal Map</li> <li>Software and Hardware</li> <li>Terminal Logs</li> </ul>	 <p><b>Remote Control</b></p> <ul style="list-style-type: none"> <li>Remote Support</li> <li>Electronic Fence</li> <li>Locking/Unlocking</li> <li>Messaging</li> <li>Reboot</li> <li>Hardware Setting</li> </ul>	 <p><b>Software Management</b></p> <ul style="list-style-type: none"> <li>Firmware Upgrades</li> <li>App Updates</li> <li>App Installation</li> <li>App Uninstallation</li> </ul>
--	---	--



**Remote Assist**

The Remote Assist function of NEXGO CLOUD helps to troubleshoot merchants' problems remotely by screen sharing. It is a cost-effective way to serve without location or time limit.



The image shows a person in a blue shirt holding a smartphone. The phone screen displays the "Remote Assist" interface, which includes a "Connecting" status and fields for "SN" (181000) and "Version" (V1.01).





NEXGO Store



RKI



## NEXGO Store

Release your apps to the world's tier one market for merchants!

We're building NEXGO app store as the world-level platform for app developers and market owners to promote their apps effectively and efficiently through NEXGO app promotion network.

## Tier One Market

No. 4 POS Global Shipment

## Sophisticated

Technical Support System

## Dedicated Marketing

Network to Promote Apps

## RKI

The RKI management system will help users check the key injection status and information anytime anywhere.

The RKI service NEXGO provided is certified by PCI PIN3.1, it's the most demanding certification with the highest security level requirements about PIN and relative key data security.

- Thousands of terminals can be remotely injected at the customer site in minutes.
- New keys can be injected remotely, eliminating downtime for merchants.
- Professional remote key and NEXGO CLOUD systems.
- RKI solution can be applied to other brand POS terminals (with customized development).



## Connectivity Management

### Web-Based Portal

Users top up their SIM cards by a browser

### Cost-effective Data Fee

One multi-functional app offers rich services.

## NEXGO SoftPOS Solution

Turn your smartphone or tablet into a payment terminal!

SoftPOS is a software based solution that can turn your smartphone, tablet or other COTS (Commercial Off-The-Shelf) mobile devices into a secure payment acceptance device without any additional hardware or dongles.



### Quick

Speed up checkout and reduce queues



### Easy

Simply integrate and get started



### Lowcost

No additional hardware needed



### Secure

PCI & EMVCo certified



### Flexible

Accept payments anytime anywhere



NEXGO Dev



NEXGO Dev is a web-based and interactive service system for ADS (Application Development Suite) downloading, finding problem solutions and getting support directly from NEXGO professional technical team.



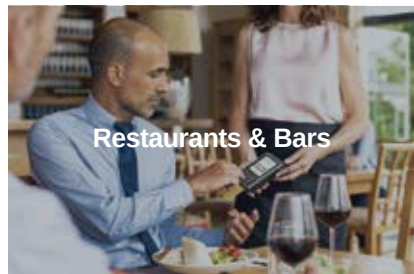
The **First** company certified for all types of PCI MPOC product



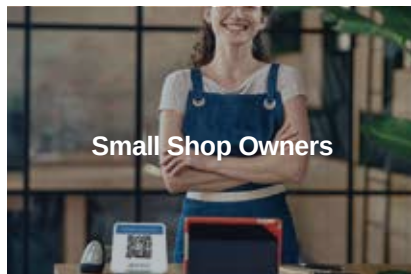
MPOC Solution Provider	Platform(s) Supported	Account Data Entry Method(s)	Evaluation Lab	MPOC Version	Installation Due Date	Annual Checkpoint Due Date
ShenZhen Nigenda Technology Co Ltd						
<b>Solution Name: NEXGO TAP</b>						
Reference #	Approved On	COV/active connections (with COV/active PIN support)	US Transaction Security PTT Lab	MPOC v1.8	18 Jan 2021	18 Jan 2025
Solution Details						
<b>MPOC Solution Provider</b>						
ShenZhen Nigenda Technology Co Ltd						
<b>Solution Name: NEXGO softpos solution</b>						
Reference #	Approved On	COV/active connections (with COV/active PIN support)	US Transaction Security PTT Lab	MPOC v1.8	18 Apr 2021	18 Apr 2025
Solution Details						
<b>MPOC AAM Service Provider</b>						
ShenZhen Nigenda Technology Co Ltd						
<b>AAM Service Name: NEXGO AAM Service</b>						
Reference #	Approved On		US Transaction Security PTT Lab	MPOC v1.8	18 Apr 2021	18 Apr 2025
Open Supported MPOC Software						

SoftPOS is the perfect solution for all markets.

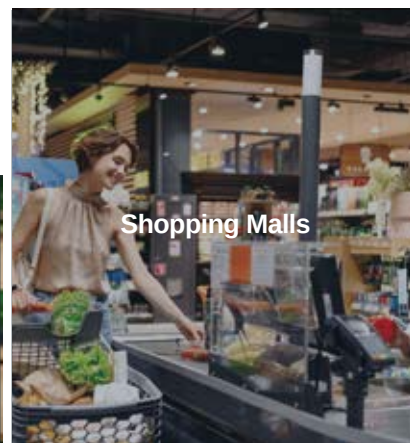
Small Shop Owners, Shopping Malls, Pop-up Stalls, Restaurants & Bars, Transport & Delivery, Service Providers



Restaurants & Bars



Small Shop Owners



Shopping Malls



Pop-up Stalls



Transport & Delivery

## NEXGO eSIM Solution

An eSIM is a digital SIM, directly embedded into smartphones, tablets, POS terminals, smart meters and other mobile devices. An eSIM compatible device can give you the freedom to instantly and remotely connect your mobile device with different mobile operators anywhere in the world.



NEXGO Provides More Complete Solutions & Services



# NEXGO Cloud Speaker Solution

The sound of money and real time audio payment confirmation on cloud speaker device!



# Technologies

## QR Code Payment

1D&2D Code Scanning  
Merchant Scanning  
Sell-service, Consumer Scanning  
Offline Payment



QR code payment is popular in some countries and regions with the development of e-wallet. There're two ways to use QR payment code. First, merchants scan the QR code of consumers. Second, consumers scan the money collecting QR code of merchants. Both ways can be applied in different scenarios. It also can be customized for various industries. like logistics and supermarkets.

## Facial Recognition

3D Structured Light Cameras  
Facial Recognition Algorithms  
Security System T-OS  
Built-in Security



Facial recognition is turning more popular nowadays, majorly due to its convenience and high level of acceptability. and it is becoming part of payment industry as well.

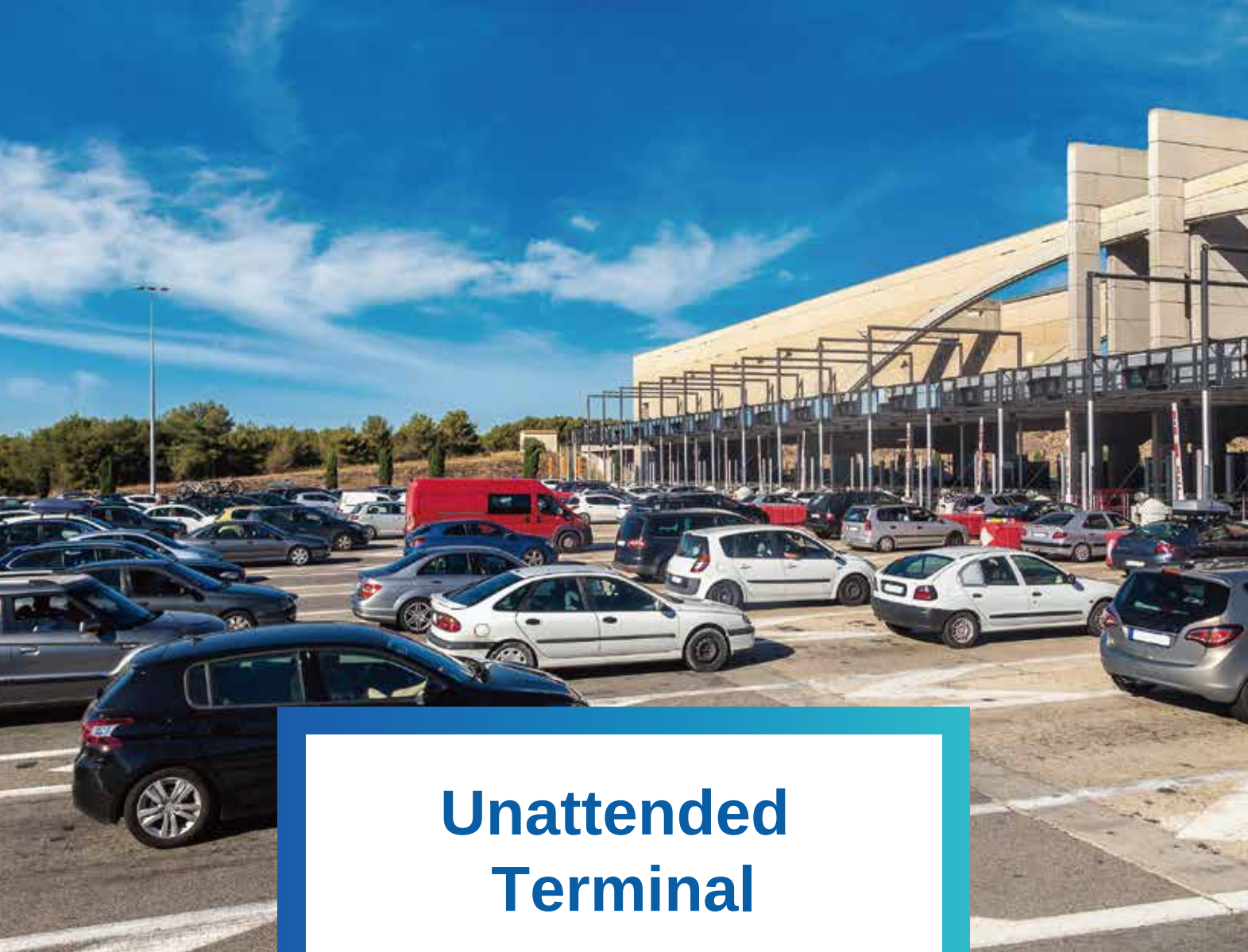
## Fingerprint Recognition

Fingerprint Identification Algorithms  
Live Finger Detection  
Capacitive/Optical Scanner  
Flexible and Optional



As a mature technology, fingerprint technology has been widely used all over the world. Everyone's fingerprints are unique and securer than 6-number passwords. And the hardware module of fingerprint recognition is flexible to be applied in different products.





# Unattended Terminal

NEXGO innovative unattended terminal helps you deliver good self-service experience.



## UN20

UN20 is an innovative unattended terminal. The Android 11 operation system sustains endless possibilities. A dedicated camera enables fast code scanning. UN20 can be easily integrated into other external devices. The built-in superior hardware provides security, stability, and a premium customer experience.

### UN20 Unattended Terminal

#### OS

Android 11

#### Processor

Quad-core  
Cortex-A53, 2.0GHz

#### Card Readers

Magnetic stripe cards  
Chip Cards  
Contactless Cards

#### Audio

1 x Speaker

#### Ports

1 x USB Type-A, 1 x USB Type-C  
1 x LAN, 2 x RS232  
1 x MDB Master & Executive,  
1 x MDB Slave  
1 x Digital I/O, 1 x SMA  
1 x HDMI

#### Environmental

Operating Temperature :  
-20°C to 70°C  
Storage Temperature :  
-30°C to 80°C  
Relative Humidity :  
10% to 95%(Non-Condensing)

#### Display

5" HD (1280 x 720) Color Screen,  
Capacitive Touchscreen, Multi-Touch

#### Memory

2GB RAM + 8GB ROM  
(Micro SD Card Supported, up to  
128GB)

#### Communication

4G/3G/2G  
Wi-Fi, 802.11a/b/g/n/ac,  
2.4GHz&5GHz  
BT5.x

#### Keys

1 Reset Key, 2 Volume Keys

#### Power

DC:12~48V(Digital I/O, MDB Slave,  
Master & Executive), RS232  
AC:19~30V(MDB Master & Executive)

#### Certifications

PCI 6.x, EMV L1&L2, EMV CL1,  
QPBOC L1, Quickpass, Paypass,  
Paywave, TQM, JCB, Discover, Amex.  
IP65, IK08, ATEX, CE, RoHS, PTCRB

#### Cameras

Front: 2 MP, FF  
Bottom: 2MP, FF with Flashlight

#### Waterproof and Dustproof

Match IP65 standard

#### Card Slots

2 x SIM  
1 x SD  
4 x SAM

#### Positioning

GPS, GLONASS or BeiDou

#### PIN Pad

Software PIN Pad  
Fixed PIN Supported

#### Physical

146\*101\*57mm  
Cutout size: 108.7mm\*86.4mm  
Device: 620 g  
Packaging: 1066 g  
(Including antenna 293 g)

#### Accessories

MDB Cable





## Smart POS

With the rapid development of technology and economy, merchants and consumers need securer, faster and more compatible payment solutions.

Android 10.X, 9.X, and 7.X  
Quad-Core Processor + Security Chip  
6.0"-5.0" HD+, HD, FWVGA Touchscreen  
4G/3G/2G, Wi-Fi, BT



# N86

Next Generation  
Smart POS Terminal

### Performant

Android 9.0 & Quad-Core Processor

### Robust

and Artistic Design

### Power-Efficient

240+ Hours Standby





# Get more

“Android 9 harnesses the power of artificial intelligence to give you more from your phone. Now it's smarter, faster and adapts as you use it.”

Android 9 Pie



## N86 Smart POS Terminal

### OS

Android 9

### Processor

Quad-core  
Cortex-A53, 1.4GHz

### Memory

1GB RAM + 8GB ROM  
2GB RAM + 16GB ROM  
(Micro SD Card Supported,  
up to 128GB)

### Display

5.0" HD (1280 x 720) Color Screen  
Capacitive Touchscreen, Multi-Touch

### Cameras

Rear : 2 MP, FF  
Optional:5 MP, AF with Flashlight  
Optional: Front : 2 MP, FF

### Accessories

Charging Base  
Multi-function Base  
Scanning Module(Built-in)  
Wristband  
Fingerprint Module(Built-in)

### Adaptor

DC 5V/2A

### Printer

High Speed Thermal Printer,  
Paper Roll Width : 58mm,  
Diameter: 40mm

### Card Readers

Magnetic stripe cards  
Chip Cards  
Contactless Cards

### Communication

4G/3G/2G  
Wi-Fi, 802.11b/g/n, 2.4GHz  
BT4.2

### Battery

7.4V/2600mAh Equals to  
3.7V/5200mAh  
Optional:7.2V/3300mAh Equals  
to 3.6V/6600mAh

### Card Slots

1 x SIM + 2 x SAM  
Optional: 2 x SIM+1 x SAM  
Optional: eSIM  
1 x SD

### PIN Pad

Software PIN Pad  
Blind PIN Supported

### Audio

1 x Speaker  
Optional:1 x Microphone

### Keys

1 Power Key, 2 Volume Keys

### Positioning

GPS, GLONASS or BeiDou

### Peripheral Ports

1 x Type C USB OTG  
6 PIN POGO PIN

### Physical

194mm(L)x80mm(W)x68.8mm(H)  
420g( Battery Included)

### Environmental

Operating Temperature :  
0°C to 50°C  
Storage Temperature :  
-20°C to 60°C  
Shockproof:1.5m

### Physical

CE, ATEX, IP54;  
EMV3.0, L1&L2, PBOC/QPBOC,  
Paypass, PayWave, JCB, AMEX,  
Discover, TQM; PCI6.X, UPTS 3.0,  
Common Criteria

## N86 Accessories



Docking Station



### For Charging

Adaptor: Type C 5V/2A



### Multi-function Base (V1)

Adaptor: Type C 5V/2A  
RS232: RJ45, 115200bps  
LAN: RJ45, 10M/100M



Multi-function Base (V2)

### Specifications:

Adaptor: Type-C 5V/2A  
RS232: RJ45, 115200bps  
LAN: RJ45, 10M/100M  
Charging + Wireless Wi-Fi ,1 USB-Slave(Type-C) ,  
1 RS232(RJ45) ,1 USB-Host ,1 Power Port(Type-C) ,  
1 LAN(RJ45)



Fingerprint Module (Built-in)

### Specifications

FAR (False Acceptance Rate) <0.001%  
FRR (False Rejection Rate) <0.1%  
Verification Time < 0.6s  
Comparison: 1:N, 1:1  
Standards: ANSI378, ISO19794-2  
Resolution: 500dpi



Scanning Module (Built-in)

### Specifications

Precision: ≥3mil  
Image Sensor: 640\*480 CMOS  
Code Scanning:  
2D: PDF417, QR Codes, Data Matrix, etc.  
1D: Code 128, EAN-13, EAN-8, etc.



Wristband

### Features:

Prevents N86 from falling  
Elastic and Adjustable

# N6



## Slim and Light

Portable

## Quad-Core Processor

8GB Flash +1GB RAM

## Cameras

5MP+2MP(Optional) rear and front cameras for 1D&2D barcodes, facial recognition and photos

## Smart and Slender

### 18 mm

Thickness

### 240 g

Weight

### 3D Lines

Tighter on your hands



## N6 Smart Mini POS Terminal

### OS

Android 10

### Processor

Quad-core  
Cortex-A53, 1.5GHz

### Memory

1GB RAM + 8GB ROM  
2GB RAM + 16GB ROM (Optional)

### Card Slots

1 x Micro SD  
2 x SIM + 1 x SAM  
Or 1 x SIM+2 x SAM (Optional)  
Or 1 x ESIM+1x SIM+1x SAM (Optional)

### Battery

3.8V/3000mAh  
Rechargeable Li-ion Battery

### Positioning

GPS, GLONASS, BEIDOU

### Display

5.0" HD (1280 x 720) Color Screen  
Capacitive Touchscreen  
Supports E-Signature

### Keys

1 Power Key  
2 Custom Keys

### Cameras

Rear: 2 MP,AF with Flashlight  
Optional:  
Front: 2 MP, FF  
Rear: 5 MP,AF with Flashlight  
Barcode Reader 1D & 2D

### Adaptor

DC 5.0V/2.0A

### Communication

4G/3G/2G  
2.4&5GHz Wi-Fi (802.11 a/b/g/n)  
BT4.0

### Accessories (Optional)

Multifunctional Docking Station  
Charging Base  
Fingerprint Reader  
Pro Scanner  
Rugged Case (Wristband is optional)

### Card Readers

Magnetic stripe cards  
Chip Cards  
Contactless Cards

### Certifications

PCI6.X, CE, FCC, EMV L1/L2, EMV CL1  
Quickpass, Paypass, PayWave, JCB,  
AMEX, Discover, TQM

### Physical

154.8mm L x 73.4mm W x 18mm H  
240g(Battery included)

### Audio

1 x Speaker

### Ports

1 x Type C USB OTG

### Environmental

Operating Temperature: 0°C to 50°C  
Storage Temperature: -20°C to 70°C  
Relative Humidity:5% to 95% (Non-Condensing)



# N6 Accessories



## Fingerprint Reader

**Features:**

Plug and play.  
Designed for a variety of usage scenarios.

**Specifications:**

FAR (False Acceptance Rate) : < 0.001%  
FRR (False Rejection Rate) : < 0.1%  
Comparison : 1:N, 1:1  
Verification Time: < 0.6s



## Charging Base

**Features :**

1 X Type-C USB  
2 Pogo PIN

**Specifications :**

185.3mm L x 81.3mm W x 37.1mm H



## Rugged Case

**Features:**

Dustproof, scratch-resistant and shockproof.

**Specifications:**

Size of the case: 165\*85\*21 mm  
Size of the wristband: 165\*20\*10 mm



## Pro Scanner

**Features:**

Precise 1D and 2D barcode scanning  
Scanning 3 times in a second

**Specifications:**

Image Sensor: 640\*480 CMOS  
Code Scanning:  
2D: PDF417, QR Code, Data Matrix, etc.  
1D: Code 128, EAN-13, EAN-8, etc.  
Precision: ≥ 3 mil



## Multifunctional Docking Station

**Features:**

One-click "PUSH" button to eject N6  
Four peripheral ports on the back.  
Clear and fast printing

**Specifications:**

Power: DC 8.5V/2.5A  
RJ45: LAN 10M/100M Supported  
RJ45: RS232  
USB-A: USB2.0 Supported  
Maximum Charging Current: 1A  
Speed: > 80 mm/S



## N82

### Performance

Android POS Terminal in Good Performance

### Portability

and Slim

### Power-Efficient

with Large Capacity Battery

## P200

### Large HD+ Screen

6.0" touchscreen with multi-touch

### Performant

Powered by Android 9.X and a quad-core processor

### Clearer and Faster

Printing, low noise and low power consumption



## N82 Smart POS Terminal

### OS

Android 10

### Memory

1GB RAM + 8GB ROM  
2GB RAM + 16GB ROM (Optional)

### Printer

High Speed Thermal Printer,  
Paper Roll Width : 58mm,  
Diameter: 40mm

### Battery

3.7V/5200mAh  
3.7V/6600mAh (Optional)

### Keys

1 Power Key, 2 Volume Keys

### Communication

4G/3G/2G  
Wi-Fi, 802.11a/b/g/n,  
2.4GHz&5GHz  
BT4.X

### Processor

Quad-Core, Cortex A53,  
1.5GHz

### Cameras

Rear: 2 MP, FF

### Card Readers

Magnetic stripe cards  
Chip Cards  
Contactless Cards

### Card Slots

2 x SIM + 1 x SAM  
1 x SIM + 2 x SAM (Optional)  
1 x SD

### Positioning

GPS, GLONASS or BeiDou

### Physical

198mm (L) x 77mm(W) x 68mm(H)  
395g (Including Battery)

### Accessories

Charging Base  
Multifunctional Base

### Display

5" FWVGA(854 x 480) Color Screen,  
Capacitive Touchscreen, Multi-Touch

### Adaptor

DC 5.0V/2.0A

### Ports

1 x Type C USB OTG  
6 PIN POGO PIN

### Audio

1 x Speaker

### Environmental

Operating Temperature :  
0°C to 50°C  
Storage Temperature :  
-20°C to 70°C

### Certifications

CE,FCC, ATEX, IP54;RoHS/WEEE;  
EMV L1&L2,EMV CL1, Quickpass,  
Paypass, PayWave, JCB, AMEX,  
Discover, TQM;PCI 6.X

## P200 Smart POS Terminal

### OS

Android 9

### Processor

Quad-core  
Cortex-A53, 1.4GHz

### Ports

Ports  
1 x Type-C OTG

### Battery

7.4V/2600mAh  
Li-ion Battery

### Adaptor

DC 5.0V/2.0A

### Audio

Built-in Speaker, 8Ω / 1W

### Memory

1GB RAM + 8GB ROM  
2GB RAM + 16GB ROM (Optional)  
(Micro SD Card Supported up to 128GB)

### Physical

214mm L\*80mm W\*52mm H  
420g(Battery Included)

### Display

6.0" HD (1440\*720) Color Screen  
Capacitive Touchscreen, Multi-Touch

### Cameras

Rear: 5 MP, AF, with Flashlight  
Front(Optional): 2 MP

### Keys

1 Power Key  
2 Volume Keys

### Certifications

3C, CE, RoHS

### Printer

High Speed Thermal Printer  
80mm/s, Paper Roll  
Width : 58mm, Diameter: 40mm

### Contactless/NFC

14443A/14443B

### Card Slots

1 x SD 3.0  
2 x SIM  
1 x SIM+1 x PSAM (Optional)

### Communication

4G/3G/2G  
Wi-Fi 2.4 GHz  
BT 4.0

### Environmental

Operating Temperature: 0°C to 50°C  
Storage Temperature: -20°C to 60°C  
Relative Humidity :  
5% to 95%(Non-Condensing)





## Portable

NEXGO portable terminals have compact designs, low power consumption and multiple ways of connectivity. They're flexible and full-functional.

Linux  
Compact Design  
2600 mAh, Low Power  
3.5"-2.4" HVGA, QVGA Color Touchscreen

## Full-Functional Terminals with Competitive Prices



Magnetic Stripe Cards



IC Cards



Contactless/NFC



1D&2D Codes

# G25

## Performance

ARM CORTEX A7 1.2GHz

## Fast Printing

High Speed Thermal Printer

## Communication

4G/3G/2G/Wi-Fi



## G25 Portable POS Terminal

### OS

Linux

### Processor

Dual-core  
Cortex-A7 1.2GHz

### Card Readers

Magnetic stripe cards  
Chip Cards  
Contactless Cards

### Printer

High Speed Thermal Printer, Paper  
Roll Width : 58mm, Diameter: 40mm

### Communication

4G/3G/2G  
Wi-Fi, 802.11b/g/n, 2.4GHz

### Battery

3.7V/2600mAh

### Keys

16 Keys for Numbers, Letters,  
Functions and Power

### PIN Pad

Hardware PIN Pad

### Physical

175mm L x 80mm W x 62mm H  
370g (Battery Included)

### Biometrics (Optional)

Fingerprint Identification

### Memory

128MB RAM+256MB ROM

### Cameras(Optional)

Rear: 0.3MP FF

### Display

2.8", 320 \* 240 TFT Color Screen;  
Adjustable Backlight Resistive  
Touchscreen (Optional)

### Card Slots

1 x PSAM, 2 x SIM  
1 x SIM+2 x PSAM (Optional)

### Audio

1 x Buzzer

### Ports

1 x Type-C USB  
1 x DC Port (Optional)

### Adaptor

DC 5V/1A

### Environmental

Operating Temperature :  
0°C to 50°C  
Storage Temperature :  
-20°C to 70°C

### Certifications

CE,FCC,ROHS/WEEE;EMV3.0,L1&L2,  
Quickpass, Paypass, PayWave, JCB,  
AMEX, Discover, TQM,Rupay,WPC  
PCI6.X



**PORTABLE  
COMPACT  
STYLISH**



**G5 Top Design**  
Inspired by Automotive Aesthetics

**PCI 6.x Certified**  
Latest Security Standards

**Architecture**  
Dual CPU Design

## G5 Portable POS Terminal

### OS

Linux

### Processor

Quad-core  
Cortex-A7 1.3 GHz

### Memory

256 RAM+512 ROM

### Display

3.5" 320\*480 TFT Capacitive  
Touchscreen

### Cameras(Optional)

Rear :0.3 MP, FF

### Audio

1 x Speaker

### Accessories

Charging Base

### Card Slots

2 x PSAM, 2 x SIM, 1 x SD

### Printer

High Speed Thermal Printer, Paper  
Roll Width : 58mm, Diameter: 40mm

### Card Readers

Magnetic stripe cards  
Chip Cards  
Contactless Cards

### Communication

4G/3G/2G  
Wi-Fi,802.11a/b/g/n/ac,  
2.4GHz&5GHz  
(Optional)  
BT5.0 (Optional)

### Battery

3.7V/2600mAh

### Certifications

CE,ROHS/WEEE;EMV3.0, L1&L2,  
Quickpass, Paypass, PayWave, JCB,  
AMEX,Discover, TQM, Rupay, NBTC,  
MIR, VCCS,  
PCI6.X

### Keys

16 Keys for Numbers, Letters,  
Functions and Power

### Ports

1 x Type-C USB  
1 x DC Port (Optional)

### PIN Pad

Hardware PIN Pad

### Adaptor

DC 5V/1A

### Physical

173.8mm L x 79.5mm W x 61mm H  
388g (Battery Included)

### Environmental

Operating Temperature :  
0°C to 50°C  
Storage Temperature :  
-20°C to 70°C



## Desktop, PIN Pad

NEXGO desktop terminal and PIN pad work perfectly together and offer consumers a more private and convenient paying environment.

Security Certifications  
Abundant Interfaces  
Contactless/NFC Payment Supported

# N6 Smart PIN Pad

## Quad-Core

Processor

## Camera

2MP Front Camera

## ECR Compatible

Multi-port expansion dock





# N6 Smart PIN Pad

## OS

Android 10

## Processor

Quad-core  
Cortex-A53, 1.5GHz

## Memory

1GB RAM + 8GB ROM  
2GB RAM + 16GB ROM (Optional)

## Keys

1 Power Key  
2 Custom Keys

## Card Slots

1 x Micro SD  
2 x SIM + 1 x SAM  
Or 1 x SIM+2 x SAM (Optional)  
Or 1 x ESIM+1x SIM+1x SAM (Optional)

## Communication

4G/3G/2G  
2.4&5GHz Wi-Fi (802.11 a/b/g/n)  
BT4.0  
Ethernet, RS232

## Accessories

Stand Base

## Environmental

Operating Temperature: 0°C to 50°C  
Storage Temperature: -20°C to 70°C  
Relative Humidity: 5% to 95% (Non-Condensing)

## Battery

3.8V/3000mAh  
Rechargeable Li-ion Battery

## Card Readers

Magnetic Stripe Cards  
Chip Cards  
Contactless Cards

## Display

5.0" HD (1280 x 720) Color Screen  
Capacitive Touchscreen  
Supports E-Signature

## Printer

High Speed Thermal  
Printer Paper Roll Width: 58mm  
Diameter: 40mm

## Positioning

GPS, GLONASS, BEIDOU

## Audio

1 x Speaker

## Physical

185.3mm L x 81.3mm W x 34.5mm H

## Ports

1 x Type C USB OTG

## Cameras

Front: 2 MP, FF

## Certifications

PCI6.X, CE, FCC, EMV L1/L2, EMV CL1  
Quickpass, Paypass, PayWave, JCB,  
AMEX, Discover, TQM

## Adaptor

DC 5.0V/2.0A

# T6

## Excellent Performance All-in-One Desktop and Portable POS Terminal





## Excellent Performance

Quad-Core Processor

## Multiple Peripheral Ports

For multi-scenarios

## All-in-One

Desktop/Portable

## T6 All-in-one Desktop and Portable POS Terminal

### OS

Linux

### Processor

Quad-Core  
Cortex-A35 1.3GHz

### Audio

1 x Buzzer  
1 x Speaker (Optional)

### Memory

256MB RAM +256MB ROM  
512MB RAM +512MB ROM(Optional)

### Card Readers

Magnetic stripe cards  
Chip Cards  
Contactless Cards

### Printer

High Speed Thermal Printer,  
Paper Roll Width : 58mm,  
Diameter: 40mm

### Adaptor

DC 9V/2A

### Keys

16 Keys for Numbers, Letters,  
Functions and Power

### Physical

80mm(L) \* 179mm (W)\*70mm(H)  
432g(Battery Included)

### Communication

4G/3G/2G(Optional)  
Wi-Fi, 802.11a/b/g/n/ac,  
2.4GHz&5GHz(Optional)

### Display

3.5", 320\*480 capacitive touch  
screen 1.9" Customer B&W  
Screen (Optional)

### Environmental

Operating Temperature :  
0°C to 50°C  
Storage Temperature :  
-20°C to 70°C

### Battery (Optional)

3.7V/2600mAh

### PIN Pad

Hardware PIN Pad

### Certifications

CE,FCC,ROHS/WEEE;EMV3.0,  
L1&L2, Quickpass, Paypass, PayWave,  
JCB, AMEX, Discover, TQM;  
PCI6.X

### Card Slots

2 x SIM  
2 x PSAM  
1 x SD

### Ports

1 x Type-C USB  
1 x Type-A USB  
1 x Ethernet  
1 x PINPAD/RS232

# G201

## Performant

Arm Cortex-A35 1.3GHz

## Multiple Ports

Fit in various scenarios

## Payment Methods

Magstripe/IC/contactless Cards



## G201 Integrated Smart PIN Pad with Excellent Performance

### OS

Linux

### Processor

Quad-Core  
Cortex-A35 1.3GHz

### Cameras(Optional)

Front: 0.3MP FF

### Memory

128MB RAM+256MB ROM

### Card Readers

Magnetic stripe cards  
Chip Cards  
Contactless Cards

### Communication

Ethernet / RS232 / USB  
Wi-Fi 2.4/5GHz 802.11a/b/g/n/ac(Optional)

### Display

2.8", 320\*240 TFT screen

### Card Slots

2 x PSAM

### Audio

1 x Buzzer

### Keys

15 keys for Numbers, Letters,  
Functions and Power

### Ports

1 x TMulti-Functional Ports (Integrated  
RS232/Ethernet/USB/Power)  
Kensington

### Environmental

Operating Temperature :  
0°C to 50°C  
Storage Temperature :  
-20°C to 70°C

### Physical

157 x 89 x 45 mm (with shield)

### Certifications

PCI 6.x, EMV L1&L2, EMV CL1,  
CE, WEEE, RoHS, Paypass,  
Paywave, QuickPass, TQM





# K110

## Contactless

Convenient

## PCI 6.X

The Latest Secure Standard

## PIN Pad

For Customers



# MiniPOS mPOS

MiniPOS and mPOS terminals are featured with small size and easy-to use design, attracting numerous users who need to go out and business starters.

## K110 Financial Payment PIN Pad

### OS

NEXGO OS

### Card Readers

Contactless Cards

### Physical

148mm L x 75mm W x 20mm H

### Processor

Cortex-M4 120MHz

### Keys

18 keys for Numbers, Letters, Functions and Power

### Environmental

Operating Temperature :  
0°C to 50°C  
Storage Temperature :  
-20°C to 70°C

### Memory

256KB RAM+4MB ROM

### Communication

RS232

### Certifications

CE,ROHS/WEEE;  
EMV CL1, Paypass, Paywave,  
QuickPass,  
PCI 6.X,

### Display

2.4" 320 x 240 TFT LCD

### Ports

1 x RJ45

119 and 136.6 mm Height

# Really Mini in Your Hands



**Smartphone**  
158 x 77.8 x 8.1 mm



**K300**  
136.6 x 67.6 x 21mm



**K206**  
119 x 65 x 21 mm

## K300

### Performant

Arm Cortex-A7 1.3GHz

### Dual-CPU

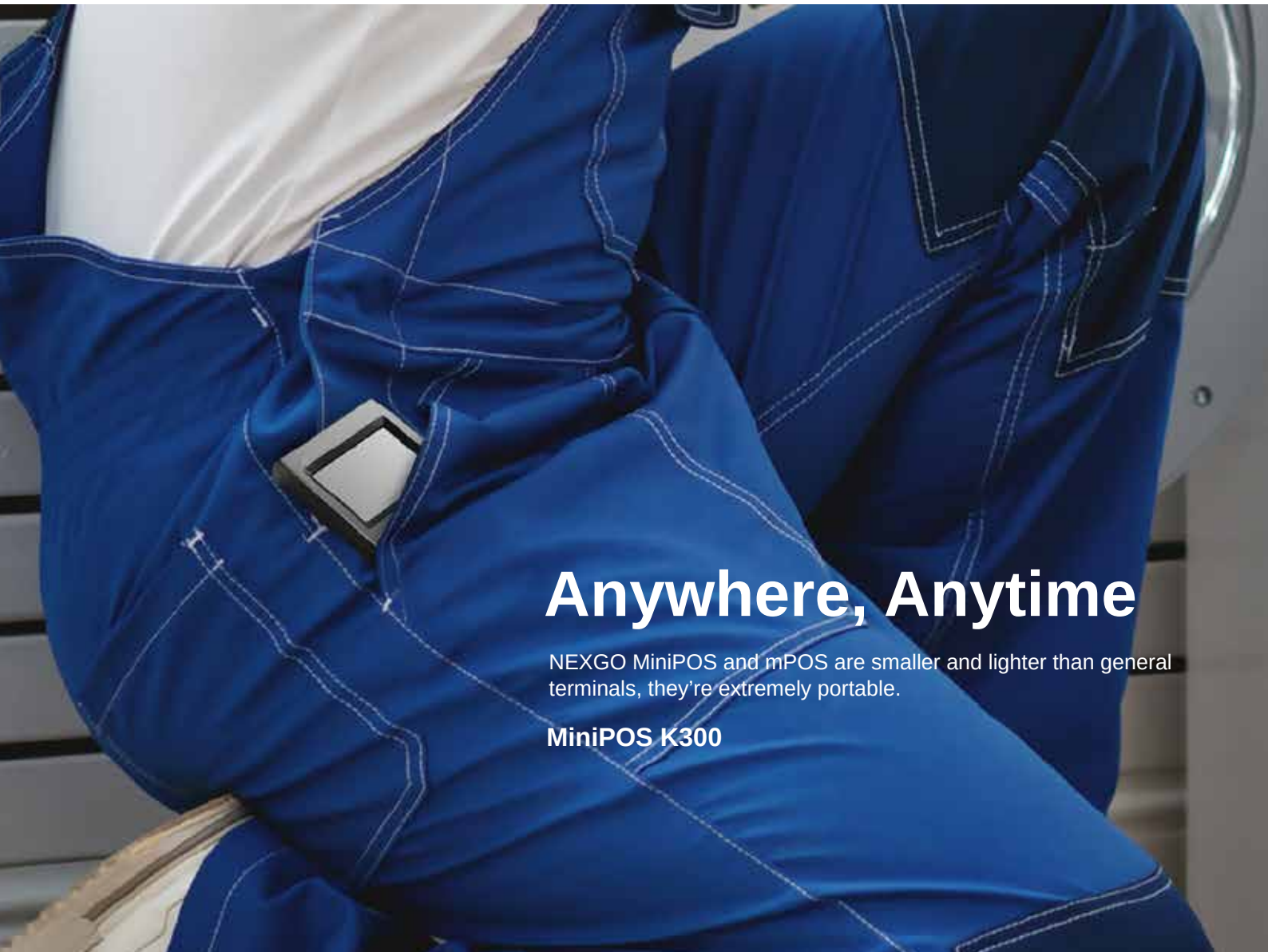
Industry-Leading Architecture Design

### Real 4G

4G/3G/2G, Wi-Fi, BLE5.0



\*The color of the K300 is customizable.



## Anywhere, Anytime

NEXGO MiniPOS and mPOS are smaller and lighter than general terminals, they're extremely portable.

### MiniPOS K300

## K300 MiniPOS

### OS

Linux

### Physical

136.6mm (L) x 67.6mm(W) x 21mm(H)  
181.6g (Including Battery)

### Card Readers

Magnetic stripe cards  
Chip Cards  
Contactless Cards

### Display

2.4" QVGA(320 x 240) Color Screen,  
Touchscreen

### Communication

4G/3G/2G  
Wi-Fi, 802.11b/g/n, 2.4GHz (Optional)  
BT 5.0 (Optional)

### Battery

3.7V/1500mAh

### Memory

256MB RAM+256MB ROM

### Display

2.4" QVGA(320 x 240) Color Screen,  
Touchscreen

### Keys

19 Keys (Numeric/ Letter/  
Function/ Power)

### Ports

1 x Type C USB  
5 PIN POGO PIN

### Environmental

Operating Temperature :  
-10°C to 40°C  
Storage Temperature :  
-20°C to 70°C

### Accessories

Charging Base

### Processor

Cortex A7, 1.3GHz

### Card Slots

2 x SIM + 1 x SAM

### Physical

136.6mm (L) x 67.6mm(W) x 21mm(H)  
181.6g (Including Battery)

### Audio

1 x Buzzer

### Certifications

CE,FCC;  
RoHS/WEEE;  
EMV L1&L2,EMV CL1, Quickpass,  
Paypass, PayWave, JCB, AMEX,  
Discover, TQM;  
PCI 6.X



# K206

## Cost-Effective

Most Recommended

## PCI 6.x

The Latest Secure Standard

## mPOS

In Your Pocket

## K206 mPOS

### OS

NEXGO OS

### Processor

Cortex-M4 120MHz

### Memory

256KB RAM+4MB ROM

### Display

(128 x 64) LCD with Backlight

### Audio

1 x Buzzer

### Ports

1 x Type C

### Physical

119mm L x 65mm W x 21mm H  
109g ( Battery Included)

### Card Readers

Magnetic stripe cards  
Chip Cards  
Contactless Cards

### Battery

3.7V/500mAh

### Adaptor

DC 5V/1A

### Communication

BT5.0

### Keys

20 keys for Numbers, Letters,  
Functions and Power

### Environmental

Operating Temperature :  
0°C to 50°C  
Storage Temperature :  
-20°C to 70°C

### PIN Pad

Hardware PIN Pad

### Certifications

CE,NCC,ROHS/WEEE;EMV3.0,  
L1&L2, Quickpass, Paypass, PayWave,  
AMEX, Rupaya,WPC  
PCI6.X



## Kiosk

Combining the technologies of facial recognition, Android, QR code payment, etc.,kiosk AF910 empowers merchants to find more opportunities.

# AF910

## Big Screen

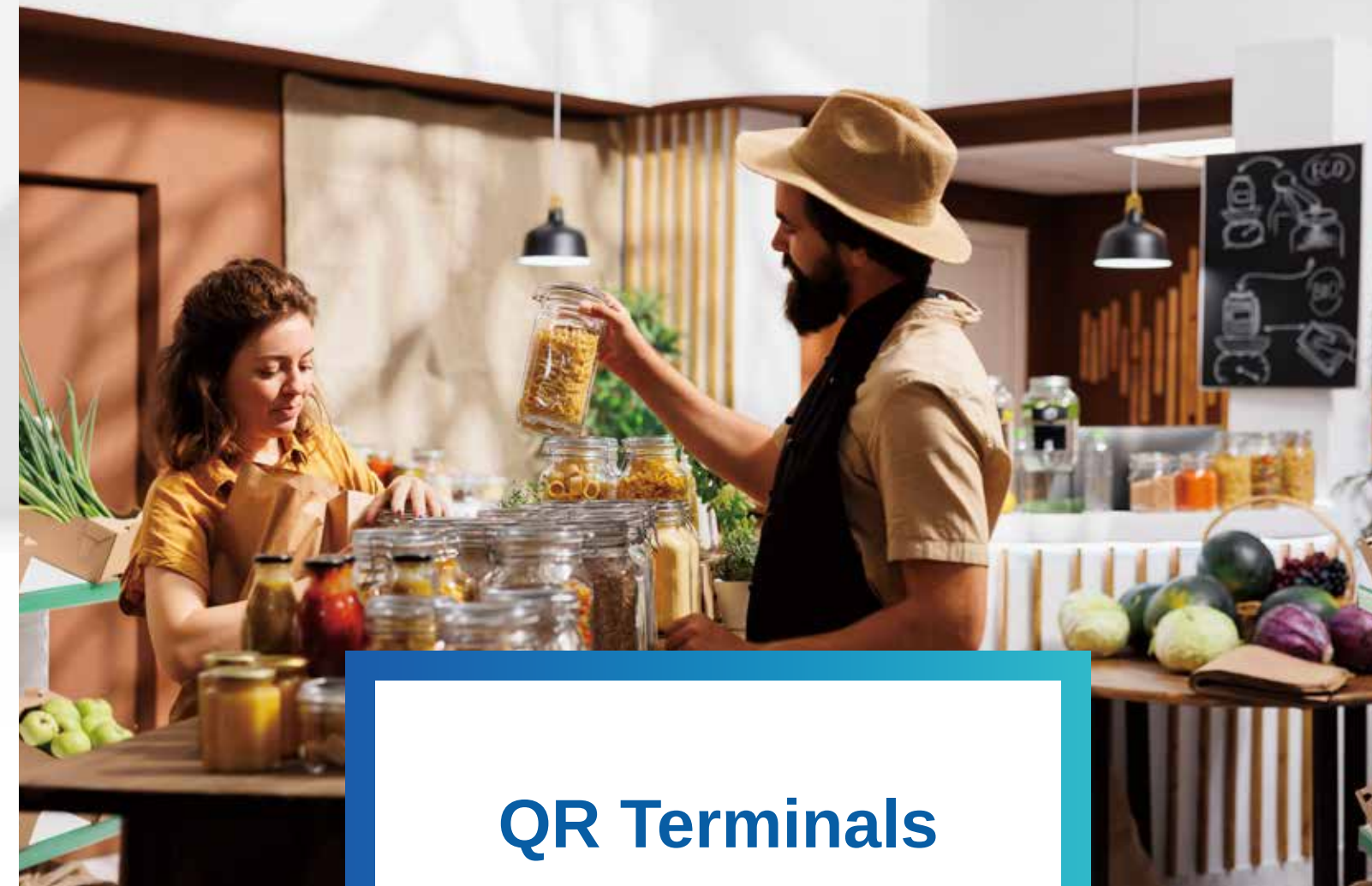
Clear and easy operation

## Self-service

Built-in Binocular camera 5 MP  
NFC Reader  
Scanning Module(1D&2D)

## Scenarios

Supermarkets, Fast-Food Stores,  
Government Organizations, etc.



## QR Terminals

QR technology is constantly developing to provide more convenient payment operation for users. People can complete the payment immediately by scanning the one-time encrypted QR code generated by smartphones without bank cards and cash.

## AF910 Kiosk

### OS

Android 11

### Display

21.5" (1920 x 1080) Color  
Screen, Capacitive Touchscreen,  
Multi-Touch

### Card Readers

NFC Reader  
Type A

### Keys

1 Power Key

### Physical

835mm (L) x 380mm(W) x 85mm(H)

### Accessories(Optional)

NFC Reader  
Scanning Module  
Professional scanner

### Processor

Cortex Quad-core  
A55, 2.0GHz

### Cameras(Optional)

Binocular camera 5 MP

### Communication

Wi-Fi 802.11a/b/g/n, 2.4 GHz  
BT 4.0  
LAN 1000M

### Ports

2 x USB 3.0  
1 x HDMI  
1 x RJ45  
1 x SD Card  
1 x DC

### Printer

Print Width: 80mm  
Paper Diameter: 80mm  
High Speed Thermal Printer  
Support Automatic Cutter

### Memory

2GB RAM + 16GB ROM  
4GB RAM + 64GB ROM(Optional)  
(Micro SD Card Supported up to 128GB)

### Printer

High Speed Thermal Printer, Paper  
Roll Width : 80mm, Diameter: 80mm

### Audio

Built-in Speaker

### Adaptor

AC:100-240V  
DC:12V-10A

### Environmental

Operating Temperature:  
-10°C to 50°C  
Storage Temperature:  
-20°C to 60°C  
Relative Humidity :  
5% to 95%(Non-Condensing)

### Certifications

3C, CE, RoHS

1D&2D Codes  
Speaker Assistant  
Reading Speed 0.3s



# KD58 Series

## Cloud

Speaker and QR Sticker

## 80 dB

Built-in Speaker

## 2600mAh

11,000+ Transaction Messages



# KD58 Series

## QR Code Payment Cloud Speaker

### Processor

32-Bit CPU

### Memory

2G Version:4MB RAM + 4MB ROM

(Extensible, up to 12MB)

4G Version:16MB RAM + 8MB ROM

(Extensible, up to 16MB)

### Ports

1XMicro-USB

1XSIM

### Light

Power: 4 LED Lights

(Excluding 4G Version)

Status: 1 LED Light

### Physical

150.5mm L X 120.0mm W X 85.5mm H

### Keys

1 x Power Key

2 x Volume Keys

1 x Replay Key

### Communication

4G/GPRS

Wi-Fi 2.4Ghz(Optional)

### Battery

2600mAh

### Power Supply

5V/1A

### Speaker

4Ω3W/≥100db@10cm

### Environmental

Operating Temperature: 0°C to 50°C

Storage Temperature: -20°C to 60°C

Relative Humidity : 5% to 95%(Non-Condensing)

# KD58C

## Mini Speaker

90x120x94 mm

## Flexible

Design for Different Scenarios

## 80 dB

Hear the transactions clearly



# KD58C

## QR Code Payment Cloud Speaker

### Processor

32-Bit CPU

### Memory

4MB RAM + 4MB FLASH

(Extensible, up to 12MB)

### Peripheral Ports

1 x Micro-USB; 1 x SIM

### Communication

GPRS

### Speaker

1M/80dB

### Physical

90mm L x120mm W x94mm H

### Keys

1 Power Key, 2 Volume Keys,

1 Reply Key

### Power Supply

5V/1A

### Battery

Built-in 2600mAh Lithium Battery

### Light

Power: 4 LED Lights

Status: 1 LED Light

### Environmental

Operating Temperature: 0°C to 50°C

Storage Temperature: -20°C to 70°C

Relative Humidity: 5% to 95%

(Non-Condensing)

# KD68

## Dynamic QR Code

Security

## Real-time Broadcast

Design for Different Scenarios

## Stylish

Elegant and Simple



## More configurations for you



Static QR Code Sticker (Standard)



6 x 7 Segment Display (Optional)



2.4 inch TFT colorful Display (Optional)



Big Static QR Code Sticker (170mmX120mm) (Optional)

# KD68

## QR Code Payment Cloud Speaker

### Processor

32-Bit CPU

### Display

Static QR Code Sticker (Standard)  
2.4 Inch TFT Colorful Display (Optional)  
6 X 7 Segment Display (Optional)  
Big Static QR Code Sticker(Optional)

### Physical

117.3\*83\*75.5mm  
231g

### Memory

8MB RAM + 8MB ROM  
(Extensible, up to 16MB)

### Ports

1 x Type C USB  
1 x SIM

### Battery

2000mAh

### Communication

4G  
Wi-Fi 2.4 GHz (Optional)

### Key

2 X Volume Key  
1 X Power Key  
1 X Function Key

### Environmental

Operating Temperature:  
0°C to 50°C  
Storage Temperature:  
-20°C to 60°C  
Relative Humidity :  
5% to 95%(Non-Condensing)

### Speaker

4Ω3w / ≥100db@10cm

### Power Supply

5V/1A



# Industry Solutions



## Banking

The service and product of the banking industry are richer in various ways and scenarios. They're facing opportunities from biometric payment, QR payment and other new payment methods. NEXGO focuses on payment technology, has the complete resource from manufacturing to after sales, and offers highly customizable products and technical service.



## Retail

New retail, merging online and offline, is the trend of the retail industry. In order to provide consumers with secure and fast payment, in addition to improving customer satisfaction and loyalty, flexible and multifunctional apps are also important to adapt to the trend of new retail and endless promotion methods. NEXGO payment terminals can be used for different online and offline scenarios, carry a variety of retail industry apps, including inventory management, membership management, billing and cashiering, sales statistics and other functions.



## Restaurants

No matter you're the owner of fancy restaurants, canteens, or roadside stands, you can always find the most suitable terminal from NEXGO products. Smart POS terminals will complete all the steps from ordering to paying. QR code payment products can improve the payment efficiency of fast-food business, and there are more portable and desktop payment devices to choose.



## Applications

NEXGO software team is committed to providing our customers with high-quality software services and building the software ecosystem beyond payment industry. In addition to building a reliable structural foundation that adapts to the global market, NEXGO software team also offers software development service for smart POS, traditional POS, mPOS and other payment devices of different industries.



## Aftersales

### Technical Support

Product Customization  
On-site Visit/ Mgt Systems/ Hotline/  
Email/ SNS

### Product Maintenance

The Maintenance Center consists of maintenance department and regional repairing service points.

### Aftersales Training

Trainers with More than 3 Years Experience  
Hardware and Software Training

### Spare Parts Supply

Spare Parts Supply System  
Spare Parts Supply Operation





## Mission

### Create Better Lives

With the rapid development for over 20 years, NEXGO now is a worldwide influential fintech enterprise. We believe that technology is the foundation of vibrant lives, thriving communities and forward progress. Therefore, NEXGO is committed to enhancing our capability to bring your business to new height.



## NEXGO Spirit

Innovation | Focusing  
Professionalism | Cooperation



## Vision

### Sustainable and Eternal NEXGO

We believe that only a healthy and long-lived company can fulfill its mission and make contributions to human society.

## Contact Us

### Headquarters

☎ 86+755+26067135

✉ [sales@xgd.com](mailto:sales@xgd.com)

📍 8th Floor, Jialian Payment Building,  
Science and Technology South 12th Road  
No. 20, Nanshan District, Shenzhen,  
Guangdong, China

